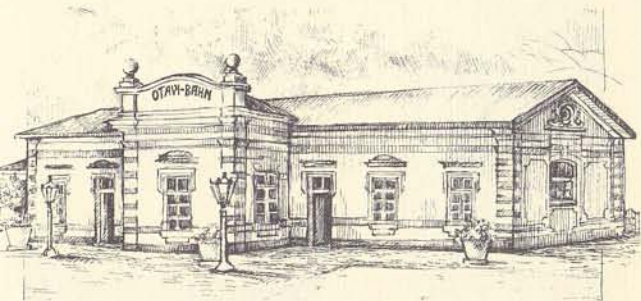


## THE SAM COHEN LIBRARY

This reference library is situated next to the former 'Otavi Bahnhof', or railway station, which was the westcoast terminal of the narrow-gauge railway line to the copper mine at Tsumeb. This building is being converted into a **Transport Museum and an Arts and Crafts Centre.**



The **Sam Cohen Library**, which initially started with only 5 books, today comprises some 10 000 volumes, which include the famous 2000-title **Africana Collection** of the late **Ferdinand Stich**. This library is a treasure chest for scholars, students and scientists alike.

The **archives**, which belong to the Society for Scientific Development, are also housed in the Sam Cohen Library. They allow visitors access to a unique collection of newspapers from 1898 to the present day. Also available is an extensive collection of historical photographs, maps and documents.

### Opening Times Sam Cohen Library

Monday - Friday  
9:00 to 13:00  
15:00 to 17:00

Saturday  
10:00 to 12:30

The guest house - former goods-shed of the Otavi Bahn - has been named '**OMEG-HAUS**' after the "Otavi Minen- und Eisenbahn Gesellschaft", and provides accommodation for visiting scientists, students and members of the Society.

Next to the Omege-Haus is also an **open-air museum** and a **small botanical garden** where indigenous plants are grown.

The Society for Scientific Development is a privately run, non-profit making organisation and is the governing body of the Swakopmund Museum and the Sam Cohen Library.

This leaflet gives only a brief outline of the Society's many activities which are made possible by the support from local and overseas friends.

**Please support our endeavours by becoming a member!**

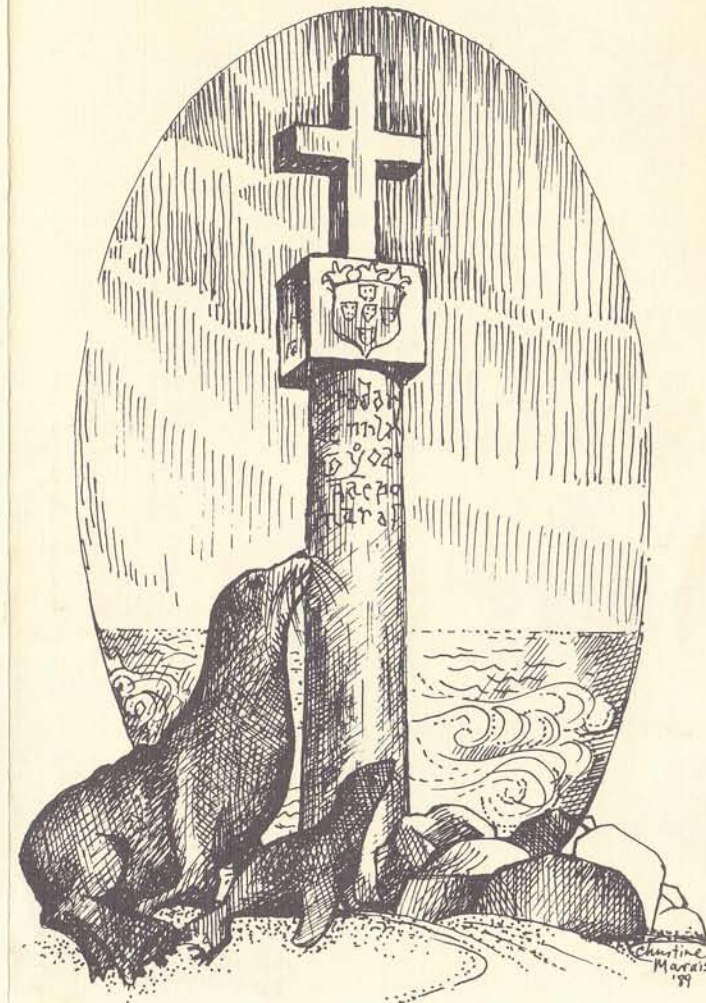
We thank you for your interest and welcome any advice, assistance or donations.

For further information please contact:

The Secretary  
The Society for Scientific Development  
P.O. Box 361  
SWAKOPMUND, NAMIBIA  
Telephone +264-(0)64-402695  
Fax +264-(0)64-400763



# Museum and Sam Cohen Library Swakopmund



## The Swakopmund Museum

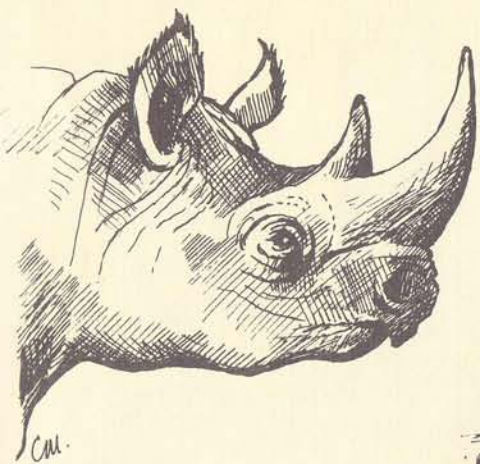
This museum was founded by Dr. Alfons Weber in 1951. Ever since its inception its objectives have been to encourage informal education, to stimulate interest in the sciences and to preserve historically valuable items for future generations.

The following exhibits may be viewed:

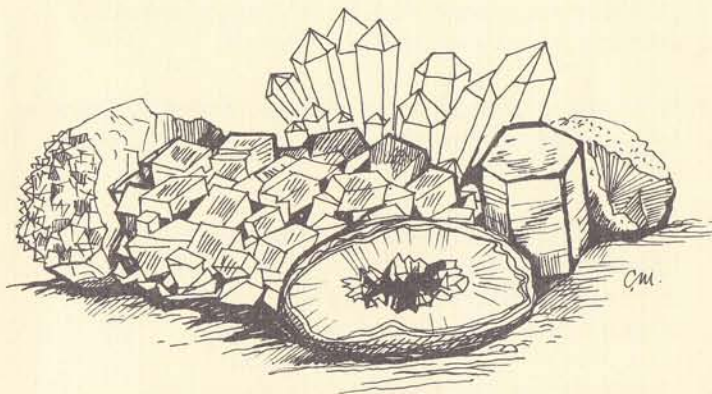
The contrasting life in the **Namib Desert and the Atlantic Ocean** are clearly depicted by means of various dioramas (three-dimensional models and scenes) displaying the seals at Cape Cross, bird life at the coastal region and a desert scene.



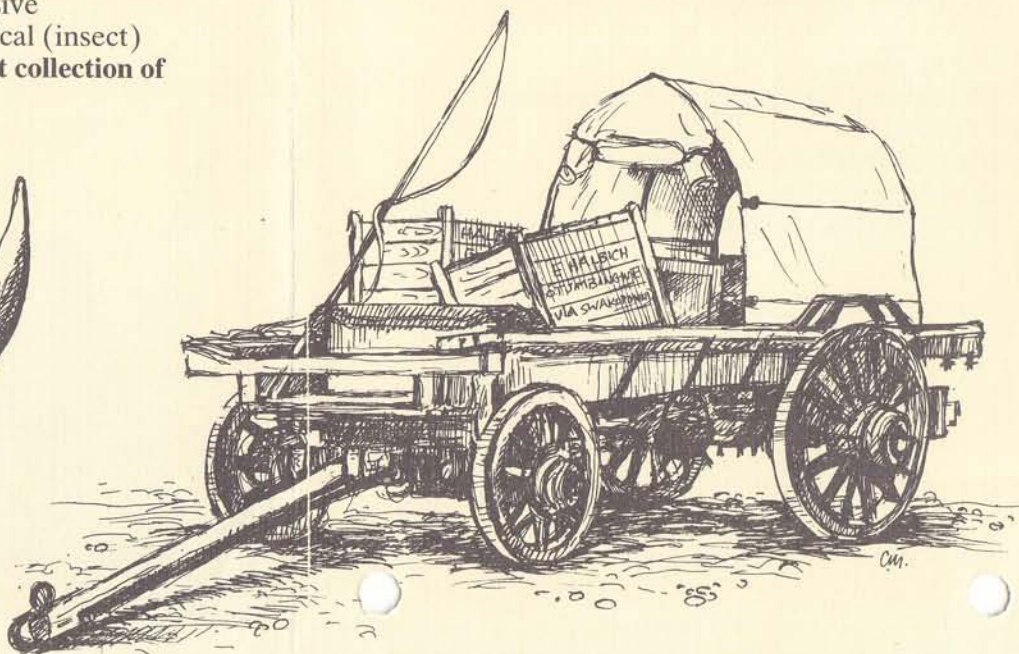
The **Emil Jensen Herbarium** exhibits the Namib flora, while a large variety of zoological specimen may also be viewed. During 1990 the museum was able to acquire the famous **Bachran Collection** which comprises a comprehensive archaeological and entomological (insect) collection, as well as the **largest collection of birds' eggs** in Namibia.



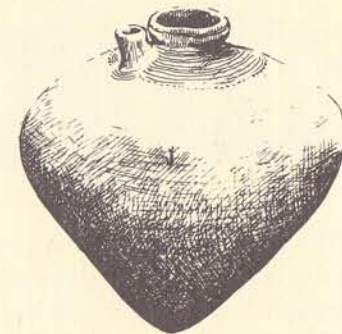
Ample space has been allocated to the excellent **mineral display** which contains some superb specimens.



An original ox-wagon, which operated between Grootfontein and Angola some hundred years ago, is exhibited, emphasizing the importance of **pioneer transport**. Also to be viewed here are the carriage of the last German governor of the colonial era, a beautiful model of a dual locomotive, marine equipment, and the old beaming system of the Swakopmund lighthouse.



The fascinating **culture of Namibia's indigenous** peoples is shown by a collection of original musical instruments, wood carvings, weapons and domestic utensils.



Next, one finds Mr. Gerd Böhlke's **Adler Pharmacy**, Dr. Alfons Weber's former **dental practice**, and the **Schmerenbeck Room** in the original 'Jugendstil'.

In the spacious **Rössing Room** - also used as a lecture room - the process of mining uranium is impressively depicted. The Museum organizes regular sightseeing **bus tours to Rössing Uranium Mine**.

Special exhibitions are often on display and are a further attraction for local and foreign visitors.

**Museum Opening Times:**  
Daily, including Sundays  
10:00 to 13:00  
14:00 to 17:00